

LED lighting

UNO T12
LED lighting tube

Reinvented sealing strip,
a new LED tube generation is born...



LED
non-adjustable

fp 0094 - 10 2018

Presentation

A new generation of LED tube is born.

This new range of tubes created by our research and development department perfectly meets the replacement of the existing fluorescent strip as well as new buildings.

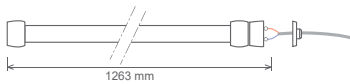
The UNO tube can be declined into 2 colors 4 000k an 6 500k and offers solutions of electric connection. Its total waterproofness IP68 and its polycarbonate design confer the tube a resistance towards the most difficult environments.

With its low consumption of 18W and with its long lifespan, the LED lighting will save you energy and time.

Scheme for models



FZ
1 connection box



BZ
1 junction box



BB
2 junction boxes

Scope of application



Agricultural :
Breeding and workshop storage buildings ...



Industry :
Industrial, food, refrigerated, freezing premises.



Logistics :
Warehouses, outside platforms ...



Community :
Technical premises, interior and exterior parking ...



Domestic : Garages, outbuildings, attics ...

Products advantages

Energy efficiency : 150 lumens/Watt
(«LHP» LED High Performance technology).

Higher performance : +/- 2 700 lumens for 18 W
(Lower power consumption and more light intensity).

Total waterproofness : IP68 (High waterproofness ensuring the best lifespan without maintenance).

High visual comfort for the user : comfort technology and anti-glare.

Anti-corrosion and salt fog test : absolute high resistance to oxidation.

No radio frequency and optical flicker emission : animals' comfort.

Immediate start : immediate maximum performance.

EC : respect all the EC standards.

ROI: very quick and auto-financing via a return on investment.

Innovation : possibility to have integrated electric connection boxes (for the BZ and BB models).

Different assembly solutions

Ring for hanging on a chain
or on a cable.

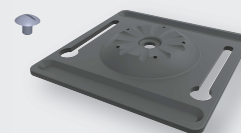


Fixation with treaded
stem Ø 6 mm.



Adjustable ceiling support

Optional accessory



Sold in packet of 2 units

Temperature colors

Commercial office Industry



K 1000 2000 3000 4000 5000 6000 7000 8000 9000 10000 11000

for information

LED Lighting

UNO^{T12}
LED lighting tube
Reinvented sealing strip,
a new LED tube generation is born ...

LED

non-adjustable

Performances and diode characteristics (According to LM-80) at source

Light intensity	180 Lm/W
Temperature color (kelvin)	4000K or 6500K
Color yield index	> 80
Lifespan	50000 H

Performances and photometric characteristics (According to LM-79) restituted

Light Power	2700 Lumens
Lumens per Watt	150 Lm/W
Scattering angle	180° without glare
IES file	available upon request

Performances and electrical characteristics (According to LM-79)

Power intensity	100 to 240 Vac
Supply voltage	77/84 mA
Consumption	18 W
Frequency	50/60 Hz
DTH	>10%
Power factor	97%
Driver	Classe II (isolated)
Regulation variation	Non-adjustable
Electric cable	2 - 1,5 mm ²
Certification	EC

Mechanical characteristics (According to LM-79)

Box dimensions	Length : 1374 mm X Width : 85 mm X Height: 65 mm
Box weight	2,2 Kg
Protection rate	IP68
Bump rate	IK 08
Tube material	Polycarbonate (Pc)
Ambient temperature (Ta)	- 20°C / + 40°C
Standard	Food grade
Standard	Insensitive to salinity

Energy efficiency advantages

Luminaire	Tube electric consumption	Luminaire electric consumption	Technology performances
Classic Neon	36 W	44 W	85 lumens/Watt
Neon LED - UNO	18W	18 W	150 lumens/Watt

Power economy consumed in Watt : 26 W that is to say 60% with 75% more of lumens/Watt

Your distributor

