

# LED Lighting

## MONO T18 LED lighting tube

reinvented sealing strip,  
a new LED tube generation is born ...



LED  
adjustable

fp 0099\_1 - 10 2018

### Presentation

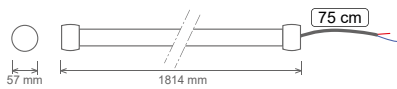
A new LED tube generation is born ...

This new range of adjustable tubes created by our research and development department is the perfect answer to the replacement of existing fluorescent strips and new buildings.

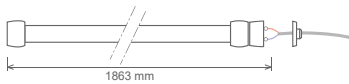
The MONO tube comes in 3 colors 2 700k, 4 000k and 6 500k and offers 3 electrical Connection solutions. Its total waterproofness (ip68) and its polycarbonate design gives it resistance to the most difficult environments.

With its low consumption of 18W and its longevity, LED lighting will save you energy and time.

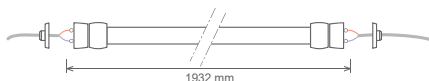
### Diagram of the models



**FZ**  
1 power cable



**BZ**  
1 junction box



**BB**  
2 junction boxes

### Application areas



**Breeding :**  
Livestock buildings poultry, pork, rabbit, cattle ...



**Industry :**  
Industrial premises, food, refrigeration and freezing.

### Regulation



The VARIOBOX box allows the variation control of the lighting power.  
2 models : 1 or 2 zones

### Product advantages

**Energy saving :** 150 lumens/Watt  
(technology «LHP» LED High Performance).

**Excellent performance :** +/- 2 700 lumens for 18 W  
(less power consumption and more light output).

**Integral waterproofness :** IP68 (Excellent waterproofness ensures the longest lifetime without maintenance).

**Greater visual comfort for the user :** comfort & anti-glare technology.

**Anti-corrosion and test fog spray test :** absolute high resistance to oxidation.

**No radio frequency and optical flicker emissions :** animal comfort.

**Instant ignition :** immediate maximum performance.

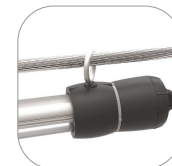
**EC :** complies with all EC standards.

**ROI :** very fast and self-financed via its return on investment.

**Innovation :** possibility of integrated electrical junction box (for BZ and BB models).

### Mounting solutions

Ring for suspension  
on chain or on cable.

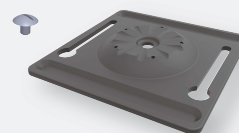


Fixing with threaded rod  
Ø 6 mm.

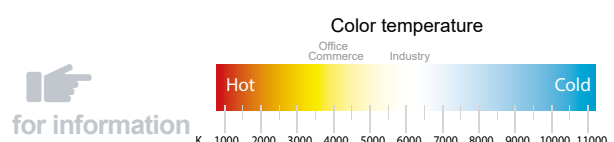


### Adjustable ceiling support

Optional accessory



Sold separately in a bag of 2 units



for information

# LED Lighting

**MONO**<sup>T18</sup>  
LED lighting tube

reinvented sealing strip,  
a new LED tube generation is born ...

LED  
adjustable

## Performance and diode characteristics (according to LM-80) *at source*

Luminous efficiency	180 Lm/W
Color temperature (Kelvin)	2700K, 4000K et 6500K
CRI (Color yield index)	> 80
Lifetime	50000 H

## Performance and photometric characteristics (According to LM-79) *restituted*

Light power	2700 Lumens
Lumens per watt	150 Lm/W
Angle of diffusion	180° without glare
IES file	Available upon request

## Performance and electrical characteristics (According to LM-79)

Power intensity	220 à 240 Vac
Supply voltage	77/84 mA
Consumption	18 W
Frequency	50/60 Hz
DTH	>10%
Power factor	97%
Driver	Classe II (isolated)
Adjustable variation	Adjustable
Electric cable	2 x 1,5 mm <sup>2</sup>
Certification	CE

## Mechanical characteristics (According to LM-79)

Box dimension	length : 1974mm X Larg : 85 mm X Haut : 65 mm
Bow weight	1,57 Kg
Protection index	IP68
Shock index	IK 08
Tube Material	Polycarbonate (Pc)
Ambient temperature (Ta)	- 20°C / + 40°C
Standard	Food grade
Standard	Insensitive to salinity

## Eco-energy benefits

Lighting	Power consumption of the tube	Lighting Power consumption	Performance Technology
Classic Neon	36 W	44 W	85 lumens/Watt
Neon LED - MONO	18W	18 W	150 lumens/Watt

**Power saving consumed in Watt: 26 W or 60% with 75% more lumens / Watt**

Your distributor

